

DESCRIPTION	REVISIONS	DATE

STATE OF OKLAHOMA
DEPARTMENT OF TRANSPORTATION

PLAN OF PROPOSED
COUNTY BRIDGE
PROJECT NO. CIRB-203D(034)RB
STATE JOB NO. 31169(04)
BRIDGE AND APPROACHES
ATOKA COUNTY
BRIDGE OVER UP RAILROAD
LATITUDE 34° 20' 20.57" N LONGITUDE -96° 09' 3.59" W
STRUCTURE NO. 03E1844N3855000
OLD NBI NO. 12807
NEW NBI NO. 31342

INDEX OF SHEETS

SHEET NO.	DESCRIPTION
0001	TITLE SHEET
0002	TYPICAL SECTION
AB01	SUMMARY OF PAY QUANTITIES - BRIDGE
AR01	SUMMARY OF PAY QUANTITIES-ROADWAY
AU01	UPRR COMPANY NOTES
BO01-BO03	RETAINING WALL DETAILS
BO04	GENERAL PLAN AND ELEVATION
BO05	STAKING LAYOUT
BO06	BORING LOGS
BO07	APPROACH SLAB
RO01-RO02	PLAN AND PROFILE
RO03	TEMPORARY EROSION CONTROL
SO01	SURVEY DATA
X001-X002	CROSS SECTIONS

SURVEY CONTROL DATA

1. HORIZONTAL CONTROL:

A. HORIZONTAL CONTROL FOR THIS SURVEY IS BASED ON THE NGS OKLAHOMA STATE PLANE COORDINATE SYSTEM, NAD83 (1993), LAMBERT PROJECTION (SOUTH ZONE), USING UNCONSTRAINED DIFFERENTIAL COORDINATES.

B. ACCURACY - THE PRIMARY CONTROL NETWORK, THE SECONDARY CONTROL NETWORK AND SECTION BOUNDARIES FOR THIS SURVEY ARE IN GENERAL COMPLIANCE WITH THE NGS SECOND ORDER, CLASS II STANDARDS FOR HORIZONTAL CONTROL (1:20,000).

2. BEARINGS:

THE BEARINGS SHOWN HEREIN OR HEREON ARE GRID BEARINGS DERIVED FROM THE NGS OKLAHOMA STATE PLANE COORDINATE SYSTEM AND ARE NOT ASTRONOMICAL.

3. VERTICAL CONTROLS:

A. LEVEL DATUM IS NAVD 88.

B. ACCURACY - VERTICAL CONTROL FOR THIS SURVEY IS WITHIN THE CLOSURE REQUIREMENT OF NOAA/NGS "CLASSIFICATION, STANDARDS OF ACCURACY, AND GENERAL SPECIFICATIONS OF GEODETIC CONTROL SURVEYS" (FEB. 1974, REPRINTED FEB. 1977) THIRD ORDER STANDARDS AS A MINIMUM.

THE FOLLOWING STANDARD DRAWINGS WILL BE PART OF THIS PROJECT:

2009 STANDARDS

ROADWAY	TRAFFIC	BRIDGE
ASCD-5-2	GET-2-00	CB26-C-SKO-ABUT-PC5-02E
LECS-4-1	GRH1-1-00	CB26-C-SKO-XSECT-PC5-01E
PUD-3-2	GRH3-1-00	CB26-C-SKO-LSECT-PCB-01E
SPB-1-4	TCS1-1-01	CB26-C-SKO-DKSLB-BLIST-01E
SPI-4-1	TCS2-1-00	CB26-C-SKO-DIA-END-PC5-01E
SSS-1-1	TCS4-1-01	CB26-C-SKO-SPR-QUAN-PCB-1-01E
TSC2-3-2	TCS5-1-00	CB26-C-SKO-SPR-QUAN-PCB-2-01E
TSD-2-0	TCS6-1-02	CB26-C-SKO..30-PCB-J-135-1-01E
	TCS7-1-02	CB26-C-SKO..30-PCB-J-135-2-01E
	TCS8-1-00	CB26-C-SKO..30-DIA-INT-PCB-01E
	TCS9-1-01	CB26-C-SKO..30-BRG-PC5-01E
	TCS14-1-00	CB26..32-C-SKO-WING-PC5-01E
	TCS16-1-00	CB26..32-C-SKO-ABUT-MISC-01E
	TCS19-1-01	CB26..32-C..I-SKO..30-GRU-BC-00E
	TCS20-1-00	TR3-2-01E
	TCS21-1-02	

DESIGN DATA

ADT 2014	= 100
ADT 2034	= 149
V	= 40 mph
ESALs	< 0.3 M (20 YR.)

SCALES

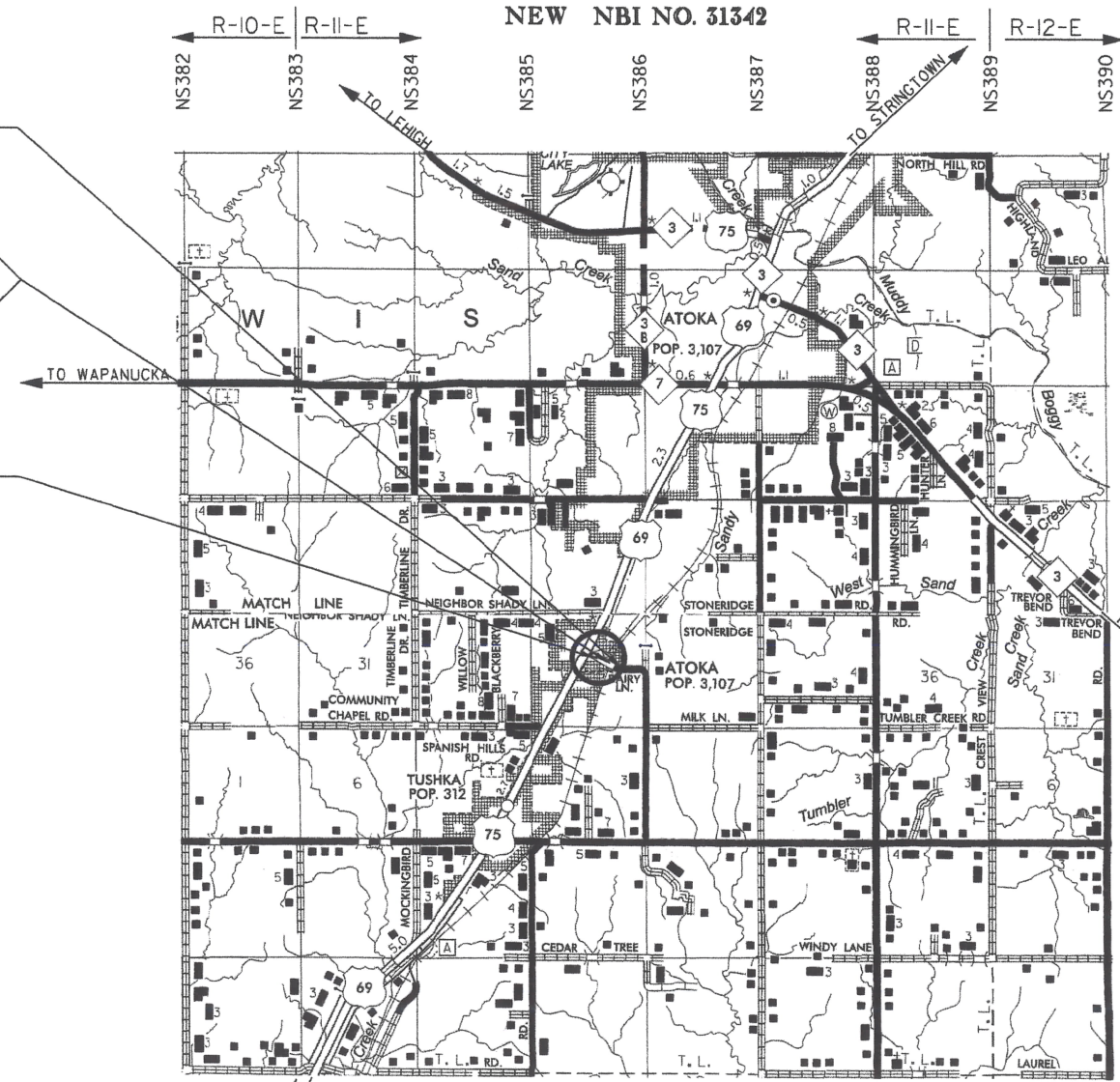
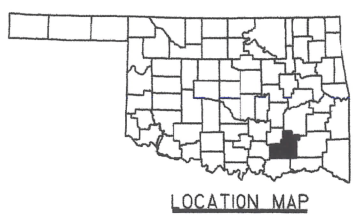
PLAN 1" = 100'

PROFILE HOR. 1" = 100'

VER. 1" = 10'

LAYOUT MAP 1" = 5280'

- CONVENTIONAL SYMBOLS
- PROPOSED ROAD
 - RAILROADS
 - RANGE & TOWNSHIP
 - SECTION LINES
 - QUARTER SECTION LINES
 - x- FENCES
 - GROUND LINE
 - EXISTING ROADS
 - BASE LINE
 - +2% -2% GRADE LINES
 - TELEPHONE & TELEGRAPH
 - POWER LINES
 - BUILDINGS
 - DRAINAGE STRUCTURES - IN PLACE
 - DRAINAGE STRUCTURES - NEW
 - PRES. R/W — RIGHT-OF-WAY LINES - EXISTING
 - R/W — RIGHT-OF-WAY LINES - NEW
 - x- RIGHT-OF-WAY FENCE



EW180

EW181

EW182

EW183

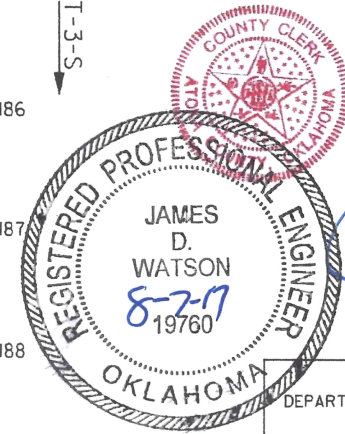
EW184

EW185

EW186

EW187

EW188



APPROVED:
THIS 7th DAY OF August 20 17

BOARD OF COUNTY COMMISSIONERS
ATOKA COUNTY, OKLAHOMA

Chairman: Phillip Cullbert
Member: Alan Dale
Member: William Wilson
Attest: Christie Perry, County Clerk

SUBMITTED BY: JAMES D. WATSON, P.E. 19760
SOUTHEAST CIRCUIT ENGR. #3
203 PEPSICOLA AVENUE
HUGO, OK 74743
PHONE: 580-323-9191

*2009 OKLAHOMA STANDARD SPECIFICATIONS FOR HIGHWAY CONSTRUCTION - ENGLISH GOVERN.
APPROVED BY THE U.S. DEPARTMENT OF TRANSPORTATION, FEDERAL HIGHWAY ADMINISTRATION, JANUARY 4, 2010.*

ROADWAY LENGTH704.85 FT0.133 MI
BRIDGE LENGTH138.17 FT0.026 MI
PROJECT LENGTH0.159 MI
EQUATIONS:NONE
EXCEPTIONS:NONE

OKLAHOMA DEPARTMENT OF TRANSPORTATION		DEPARTMENT OF TRANSPORTATION FEDERAL HIGHWAY ADMINISTRATION	
DATE APPROVED		DATE APPROVED	
BY		BY	
	CHIEF ENGINEER		DIVISION ADMINISTRATOR
SW0	PROJECT NO.	CIRB-203D(034)RB	